

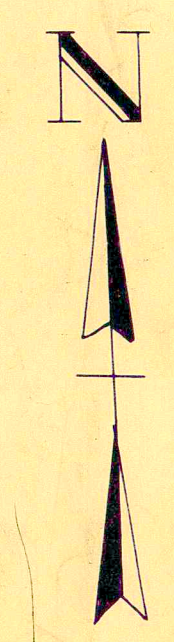
ROAD INDEX

A	ALDENSHIRE DR C4	I cont	S	SHANTE CT B3-B4
	AQUILLA BLVD C3	J	STELLAELL RD F3-B3	
	AQUILLA RD A1-BE		STONELEISE DR F1-F2	
			STONEY SPRINGS DR C4	
B	BERKSHIRE DR B3	K	TAYLOR WELLS RD C1-D6	
		K	TURNER DR (PVT) B3	
			KILE RD F4-G1	
C	CHARDON WINDSOR RD D1-G2	L	LORING AVE (PVT) B3	
	CLARIDON PARK DR D2			
	CLARIDON TROY RD D1-E6			
	CORNELIA DR (PVT) B3			
D	DURKEE RD F4-G6	M	MAYFIELD RD A4-G4	
			MEADOWWOOD DR (PVT) B2	
			MERRITT RD A6	
E	EVANS RD D5-F5	N		
F	FOREST RD E6-F6	O	OLD STATE RD 1E1-G6	
G	GARDON DR (PVT) B3	P		
H	HALL RD C2-D3	Q		
I		R	RAVENWOOD DR A6	

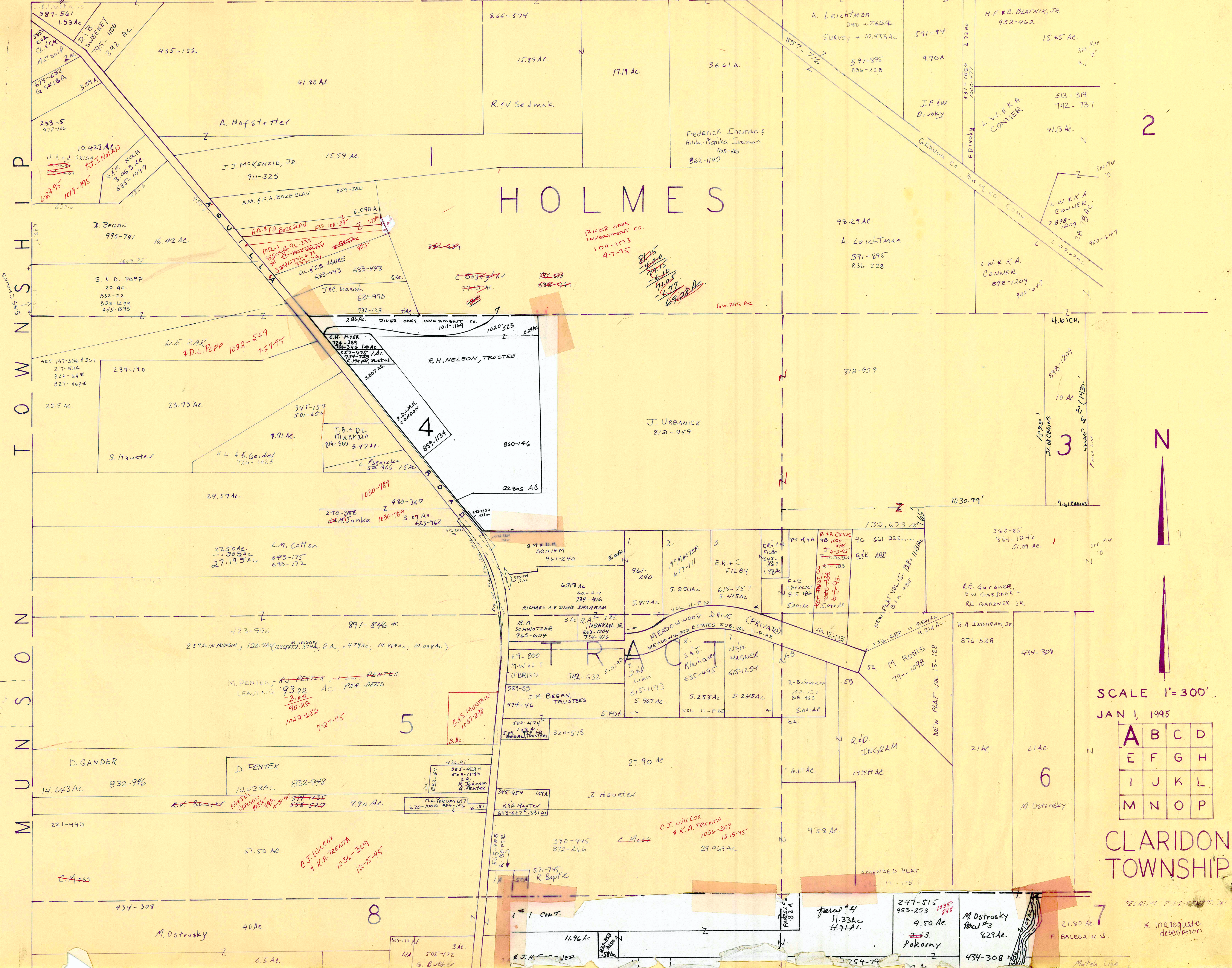
- ① CLARIDON ELEMENTARY SCHOOL
- ⑩ PLEASANT HILL COUNTY HOME
- ② EAST CLARIDON METHODIST CHURCH
- ⑪ GEauga COUNTY COMM. HOSPITAL
- ③ THE FIRST CONGREGATIONAL CHURCH
- ⑫ CLARIDON TOWN HALL
- ④ CHRISTIAN MISSIONARY ALLIANCE CH.
- ⑬ U.S. POST OFFICE (CLARIDON)
- ⑤ CLARIDON CENTER CEMETERY
- ⑭ GEauga COUNTY SAFETY CENTER
- ⑥ EAST CLARIDON CEMETERY
- ⑮ GEauga COUNTY WELFARE DEPT
- ⑦ WEST CLARIDON CEMETERY
- ⑯ GEauga COUNTY HOME CEMETERY
- ⑧ GEauga COUNTY HOME CEMETERY
- ⑰

CLARIDON TOWNSHIP

SCALE = 1" = 2000'
 ROBERT L. PHILLIPS
 GEAGA COUNTY ENGINEER



H A M B U R G T O W N S H I P



2

3

5

6

7

8

SCALE 1"=300'
JAN 1, 1995

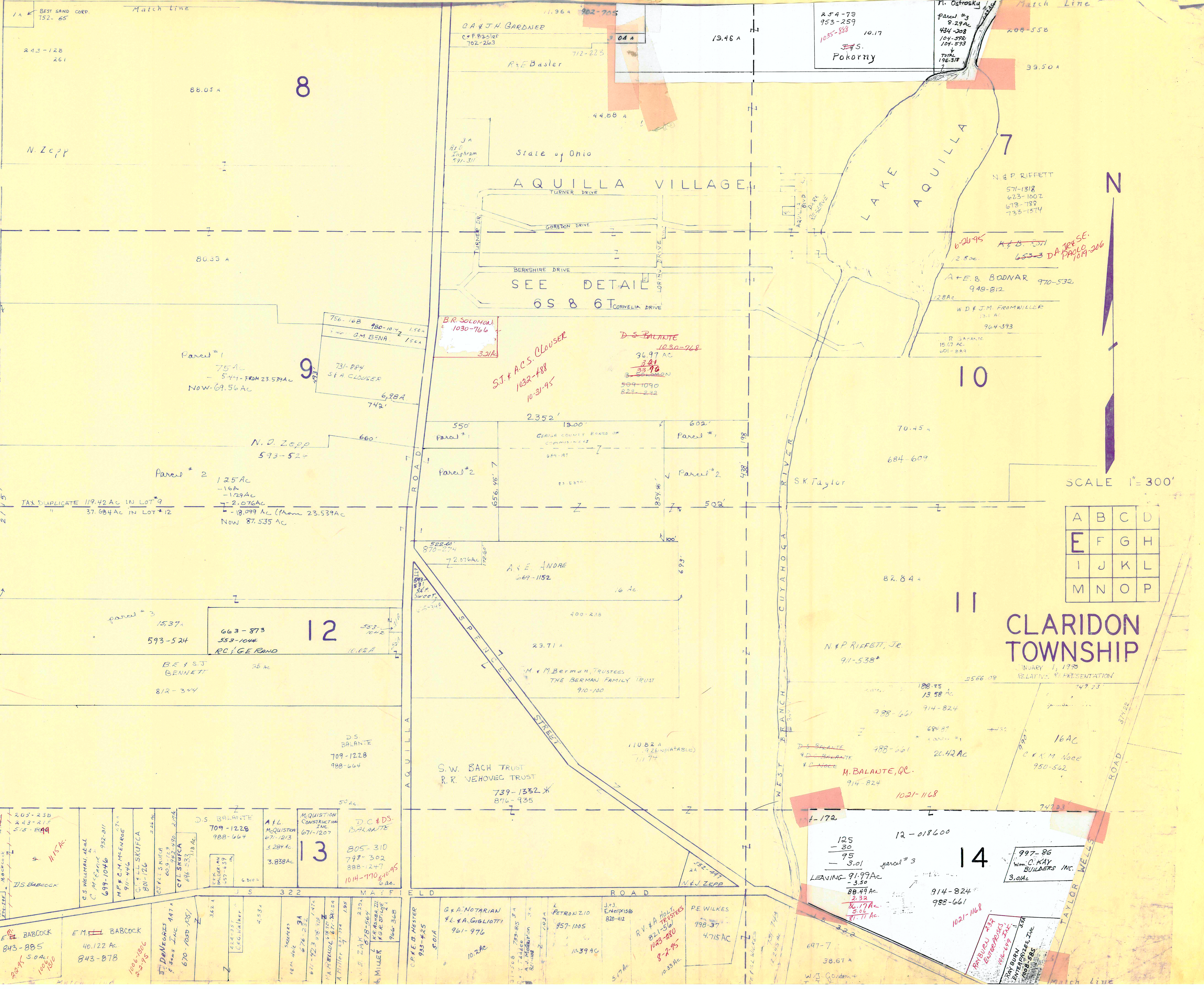
A	B	C	D
E	F	G	H
I	J	K	L
M	N	O	P

CLARIDON TOWNSHIP

RELATIVE PLAT DESCRIPTION

* Inadequate description

T O W N S H I P
M U N I C I P A L I T Y



A	B	C	D
E	F	G	H
I	J	K	L
M	N	O	P

CLARIDON TOWNSHIP

JANUARY 1, 1995
RELATIVE REPRESENTATION

SCALE 1" = 300'

1 A BEST SAND CORP.
152-65

243-128
261

N. Zepp

80.33 A

TAX DUPLICATE 119.42 AC IN LOT #9
37.684 AC IN LOT #12

15.37
593-524

209-238
243-215
515-899

E. BABCOCK
843-885
5.04 AC
1006-1806
8-2-95

E.M. BABCOCK
40.122 AC
843-878
1006-1806
8-2-95

D. DeLeonis
F. Sons Inc
670-1050 (35)
1006-1806
8-2-95

D.S. BALANTE
709-1228
988-664

A & L
McQUISTON
671-1213
3.28 AC

M. QUISION
CONSTRUCTION
INC
671-1207
3.838 AC

D.C. & D.S.
BALANTE
805-310
798-302
888-247
1014-1910 (10)
6 ac.

G & A NOTARIAN
E.L. A. GIULIOTTI
961-976
10.2 AC

C. R. B. HESTER
933-425
5.01 AC

P. A. NOTARIAN
E.L. A. GIULIOTTI
961-976
10.2 AC

L. PETRONZIO
957-1005
10.39 AC

J.J. Enterprises
820-412
5.7 AC

R.V.A. HOLDINGS
821-561
1003-280
8-2-95
10.53 AC

PE WILKES
998-37
4.715 AC

697-7
38.67 A

914-824
988-661
1021-1168

997-86
Wm. C. KAY
BUILDERS INC.
3.0 AC

RAY BURY
ENTERPRISES INC.
1003-280
8-2-95

B.R. SOLOMON
1030-766
3.21 AC

S.J. & A.C.S. CLOUSER
1032-488
10-31-95

D.S. BALANTE
1030-768
36.97 AC
3.81
33.16
509-1090
223-249

756-16B
780-104
156A
G.M. BENA
156A

Parent #1
75 AC
- 5.44 FROM 23.539 AC
Now 69.56 AC

N. D. Zepp
593-524

Parent #2
125 AC
- 16A
- 1.29 AC
- 2.07 AC
- 18.099 AC (From 23.539 AC)
Now 87.535 AC

522-60
870-274
72.076 AC

A & E ANDRE
669-1152
16 AC

23.71 A
400-216

S.W. BACH TRUST
R.R. VEHOVEC TRUST
739-1352 X
876-935

50 AC

55-491
N & J ZEPP

322

31-506
788-853 A
A.J. MATHIAS
20-108
2-103 A

N.E. ZAR
878-565
K.R. ASHBA III
1400-0725
A. MILLER
966-368

11.96 A
902-705

O & J H GARDNER
C & P BASLER
702-263

R & E Basler
712-223

3 A
R.L.O.
Ingram
591-311

State of Ohio

AQUILLA VILLAGE

TURNER DRIVE

SEE DETAIL
6 S 8 6 T

550'

Parent #1

Parent #2

522-60
870-274

72.076 AC

522-60
870-274

72.076 AC

522-60
870-274

72.076 AC

522-60
870-274

72.076 AC

522-60
870-274

72.076 AC

522-60
870-274

72.076 AC

522-60
870-274

72.076 AC

13.46 A

44.88 A

44.88 A

44.88 A

44.88 A

44.88 A

44.88 A

44.88 A

44.88 A

44.88 A

44.88 A

44.88 A

44.88 A

44.88 A

44.88 A

44.88 A

44.88 A

44.88 A

44.88 A

44.88 A

44.88 A

44.88 A

44.88 A

44.88 A

44.88 A

254-78
953-259
1035-888
10.17
J.S.
Pokorny

10.17

10.17

10.17

10.17

10.17

10.17

10.17

10.17

10.17

10.17

10.17

10.17

10.17

10.17

10.17

10.17

10.17

10.17

10.17

10.17

10.17

10.17

10.17

10.17

M. Ostrosky
Parcel #3
8.29 AC
434-308
104-598
104-593
744
196-318

8.29 AC

8.29 AC

8.29 AC

8.29 AC

8.29 AC

8.29 AC

8.29 AC

8.29 AC

8.29 AC

8.29 AC

8.29 AC

8.29 AC

8.29 AC

8.29 AC

8.29 AC

8.29 AC

8.29 AC

8.29 AC

8.29 AC

8.29 AC

8.29 AC

8.29 AC

8.29 AC

8.29 AC

200-558

39.50 A

39.50 A

39.50 A

39.50 A

39.50 A

39.50 A

39.50 A

39.50 A

39.50 A

39.50 A

39.50 A

39.50 A

39.50 A

39.50 A

39.50 A

39.50 A

39.50 A

39.50 A

39.50 A

39.50 A

39.50 A

39.50 A

39.50 A

39.50 A

571-1318
623-1002
678-1782
733-1514

571-1318

571-1318

571-1318

571-1318

571-1318

571-1318

571-1318

571-1318

571-1318

571-1318

571-1318

571-1318

571-1318

571-1318

571-1318

571-1318

571-1318

571-1318

571-1318

571-1318

571-1318

571-1318

571-1318

571-1318

620-745
K & B. 1971
653-3 D.A. 1945
PAGE 19-206

620-745

620-745

620-745

620-745

620-745

620-745

620-745

620-745

620-745

620-745

620-745

620-745

620-745

620-745

620-745

620-745

620-745

620-745

620-745

620-745

620-745

620-745

620-745

620-745

A & E B. BODNAR
970-532
948-812

970-532

970-532

970-532

970-532

970-532

970-532

970-532

970-532

970-532

970-532

970-532

970-532

970-532

970-532

970-532

970-532

970-532

970-532

970-532

970-532

970-532

970-532

970-532

970-532

W.D. & J.M. FROMMILLER
13.1 AC
964-393

964-393

964-393

964-393

964-393

964-393

964-393

964-393

964-393

964-393

964-393

964-393

964-393

964-393

964-393

964-393

964-393

964-393

964-393

964-393

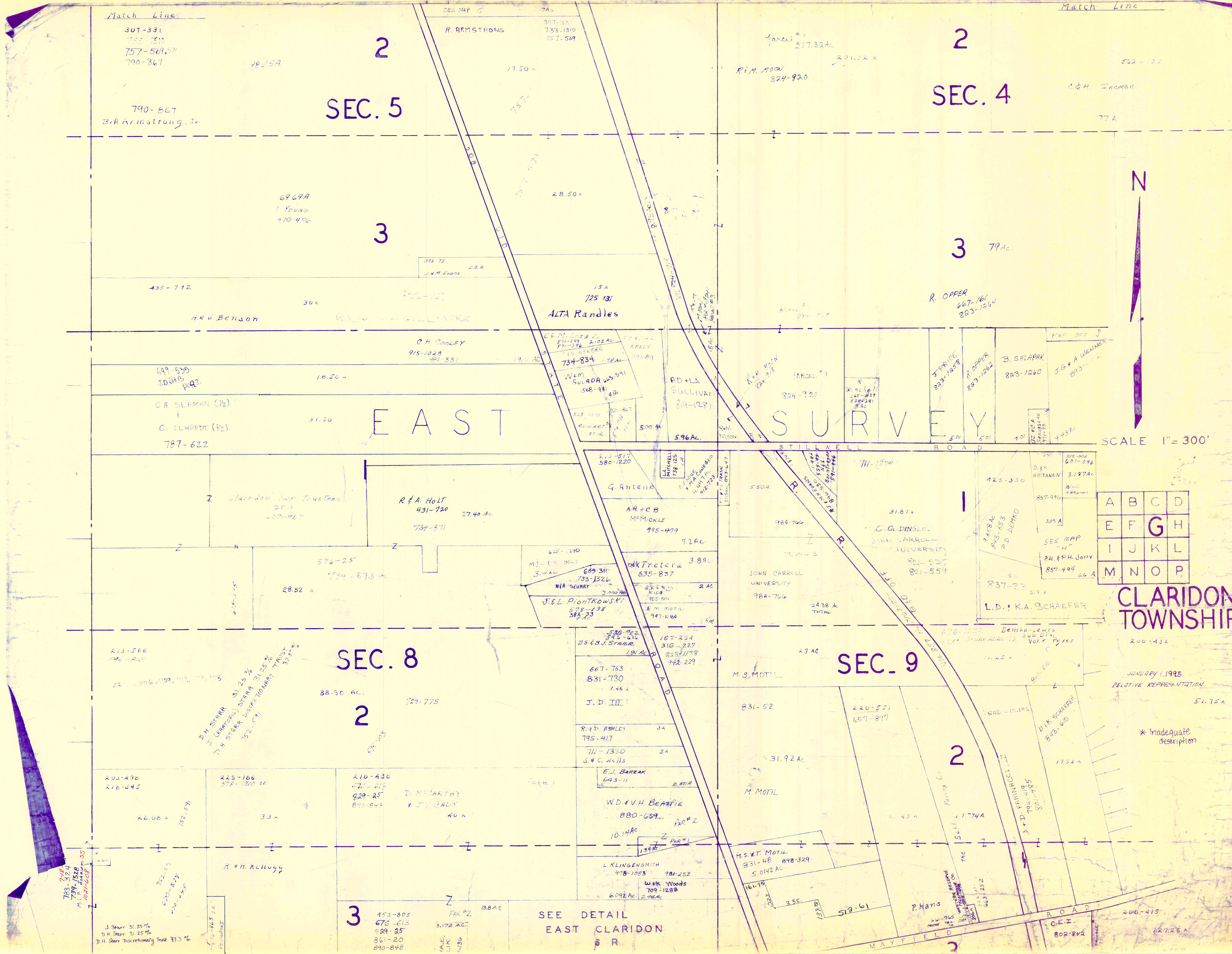
964-393

964-393

964-393

964-393

96



Match Line
307-331
777-310
757-569, 571
790-867

307-331
733-1310
757-569

Parcel #1
217.32 AC
R.M. MOON
824-920

Match Line
562-122
C.H. Freeman
77 A.

SEC. 5

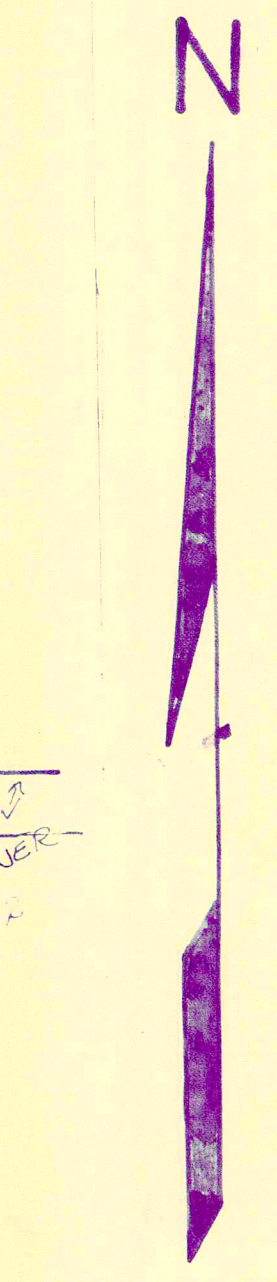
SEC. 4

3

3

EAST

SURVEY



SCALE 1" = 300'

A	B	C	D
E	F	G	H
I	J	K	L
M	N	O	P

CLARIDON TOWNSHIP

JANUARY 1, 1995
RELATIVE REPRESENTATION

* Inadequate description

J. Starr 31.25%
D.H. Starr 31.25%
D.H. Starr Discretionary Trust 37.5%

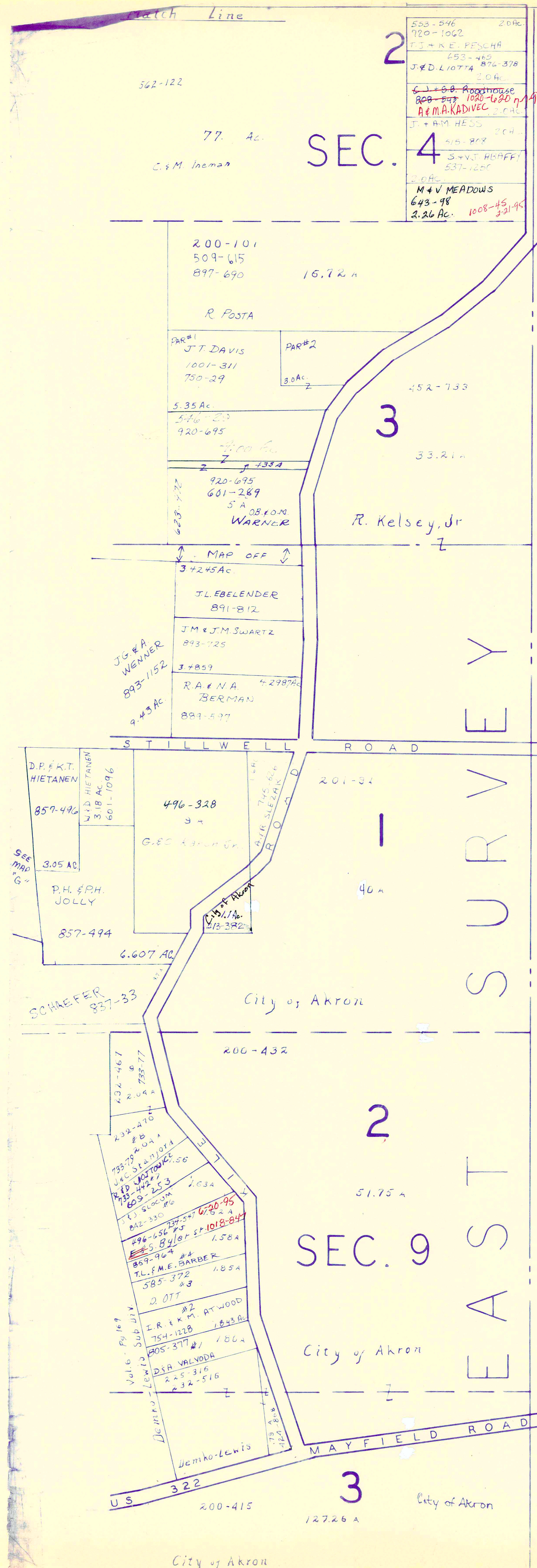
SEE DETAIL
EAST CLARIDON

3
453-805
676-613
829-25
861-20
890-848

P. Hans

808-852

127.26 A

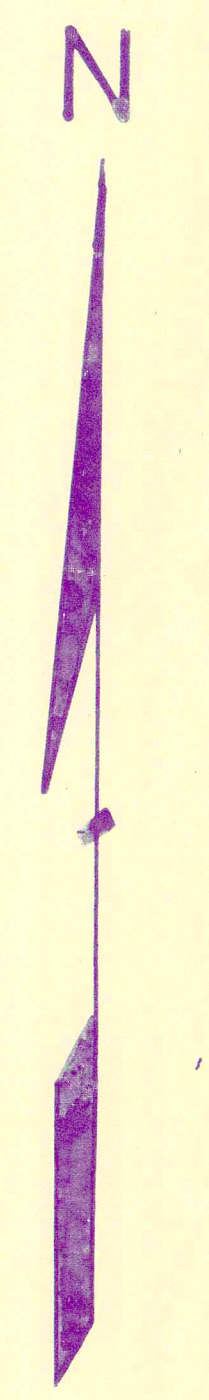


HUNTSBURGH TOWNSHIP

SEC. 4

SEC. 9

SEC. 10



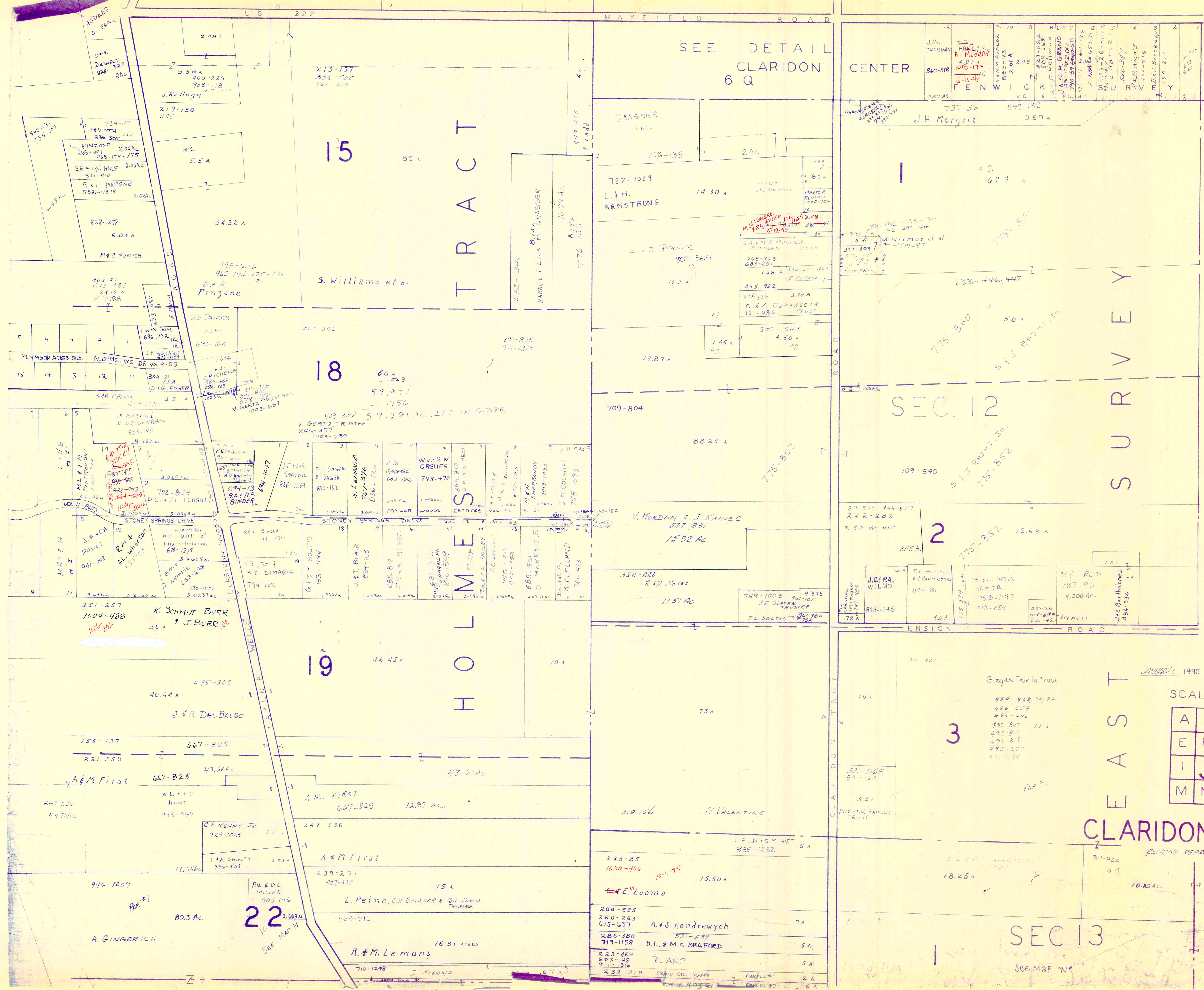
SCALE 1" = 300'

January 1995
Relative Representation

* Inadequate description

A	B	C	D
E	F	G	H
I	J	K	L
M	N	O	P

CLARIDON TOWNSHIP



SEE DETAIL
CLARIDON
6 Q

T R A C T

H O L M E S

S U R V E Y

CLARIDON TWP

SCALE 1"=300'

A	B	C	D
E	F	G	H
I	J	K	L
M	N	O	P

SEC 13

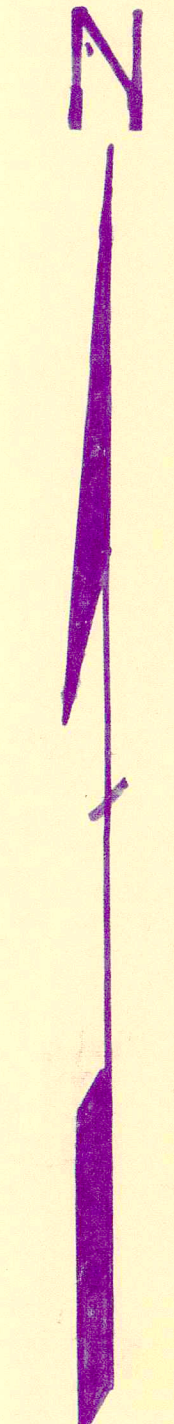
See MAP "N"

* Inadequate description

SEC. 12

2

3



12	J.W. SHERMAN	860-318
11	HARDY	201
10	K.M. AVALEN	883-113
9	WILLIAMS	509-687
8	J.L.M. GRANO	423-682
7	WILLIAMS	509-687
6	WILLIAMS	509-687
5	WILLIAMS	509-687
4	WILLIAMS	509-687
3	WILLIAMS	509-687
2	WILLIAMS	509-687
1	WILLIAMS	509-687

J.H. Morgret

62.9 A

633-446, 447

775-360

50 A

709-840

8825 A

709-840

242-282

845 A

15.62 A

775-352

311-422

10 A

531-068

55 A

18.25 A

10.05 AC

RELATIVE REPRESENTATION

311-422

8 A

737-56

542-182

969 A

775-852

511-209

511-209

775-360

511-209

775-360

511-209

775-360

511-209

775-360

511-209

775-360

511-209

775-360

511-209

775-360

511-209

775-360

511-209

775-360

737-56

542-182

969 A

775-852

511-209

511-209

775-360

511-209

775-360

511-209

775-360

511-209

775-360

511-209

775-360

511-209

775-360

511-209

775-360

511-209

775-360

511-209

775-360

737-56

542-182

969 A

775-852

511-209

511-209

775-360

511-209

775-360

511-209

775-360

511-209

775-360

511-209

775-360

511-209

775-360

511-209

775-360

511-209

775-360

511-209

775-360

737-56

542-182

969 A

775-852

511-209

511-209

775-360

511-209

775-360

511-209

775-360

511-209

775-360

511-209

775-360

511-209

775-360

511-209

775-360

511-209

775-360

511-209

775-360

737-56

542-182

969 A

775-852

511-209

511-209

775-360

511-209

775-360

511-209

775-360

511-209

775-360

511-209

775-360

511-209

775-360

511-209

775-360

511-209

775-360

511-209

775-360

737-56

542-182

969 A

775-852

511-209

511-209

775-360

511-209

775-360

511-209

775-360

511-209

775-360

511-209

775-360

511-209

775-360

511-209

775-360

511-209

775-360

511-209

775-360

737-56

542-182

969 A

775-852

511-209

511-209

775-360

511-209

775-360

511-209

775-360

511-209

775-360

511-209

775-360

511-209

775-360

511-209

775-360

511-209

775-360

511-209

775-360

737-56

542-182

969 A

775-852

511-209

511-209

775-360

511-209

775-360

511-209

775-360

511-209

775-360

511-209

775-360

511-209

775-360

511-209

775-360

511-209

775-360

511-209

775-360

737-56

542-182

969 A

775-852

511-209

511-209

775-360

511-209

775-360

511-209

775-360

511-209

775-360

511-209

775-360

511-209

775-360

511-209

775-360

511-209

775-360

511-209

775-360

737-56

542-182

969 A

775-852

511-209

511-209

775-360

511-209

775-360

511-209

775-360

511-209

775-360

511-209

775-360

511-209

775-360

511-209

775-360

511-209

775-360

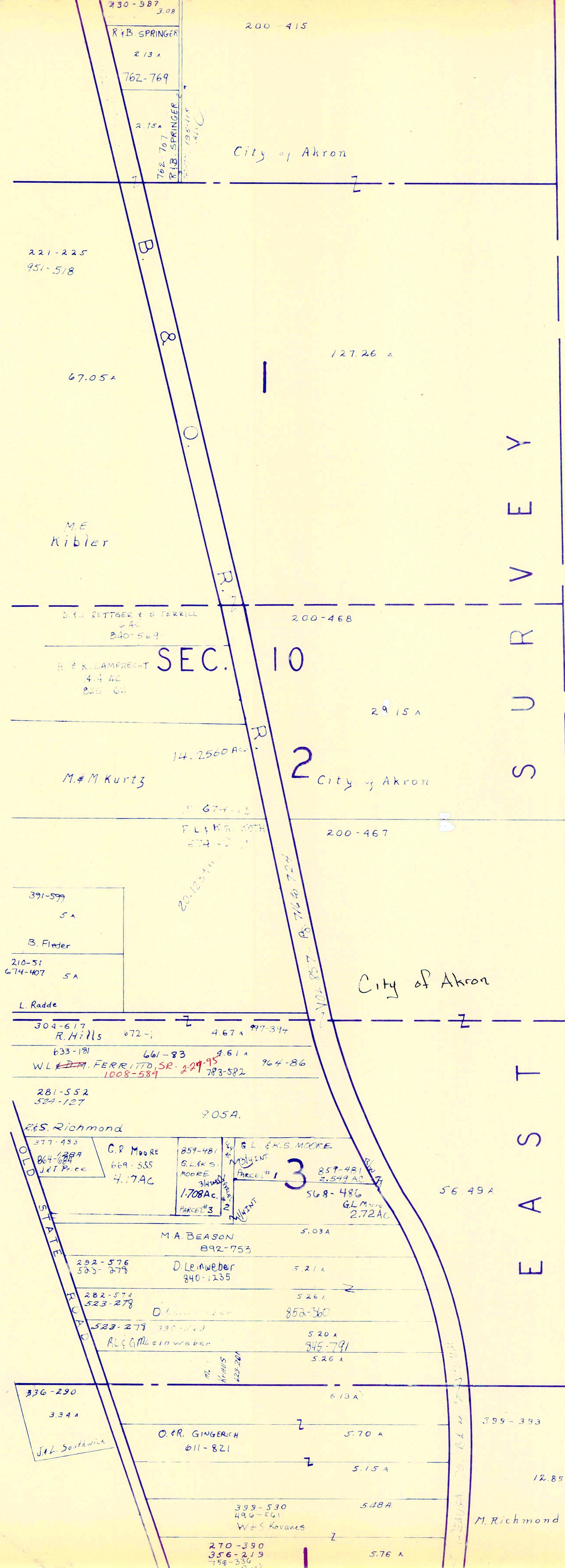
511-209

775-360

737-56

542-182

969 A



S U R V E Y
 T O W N S H I P
 E A S T
 H U N T S B U R G



* inadequate description

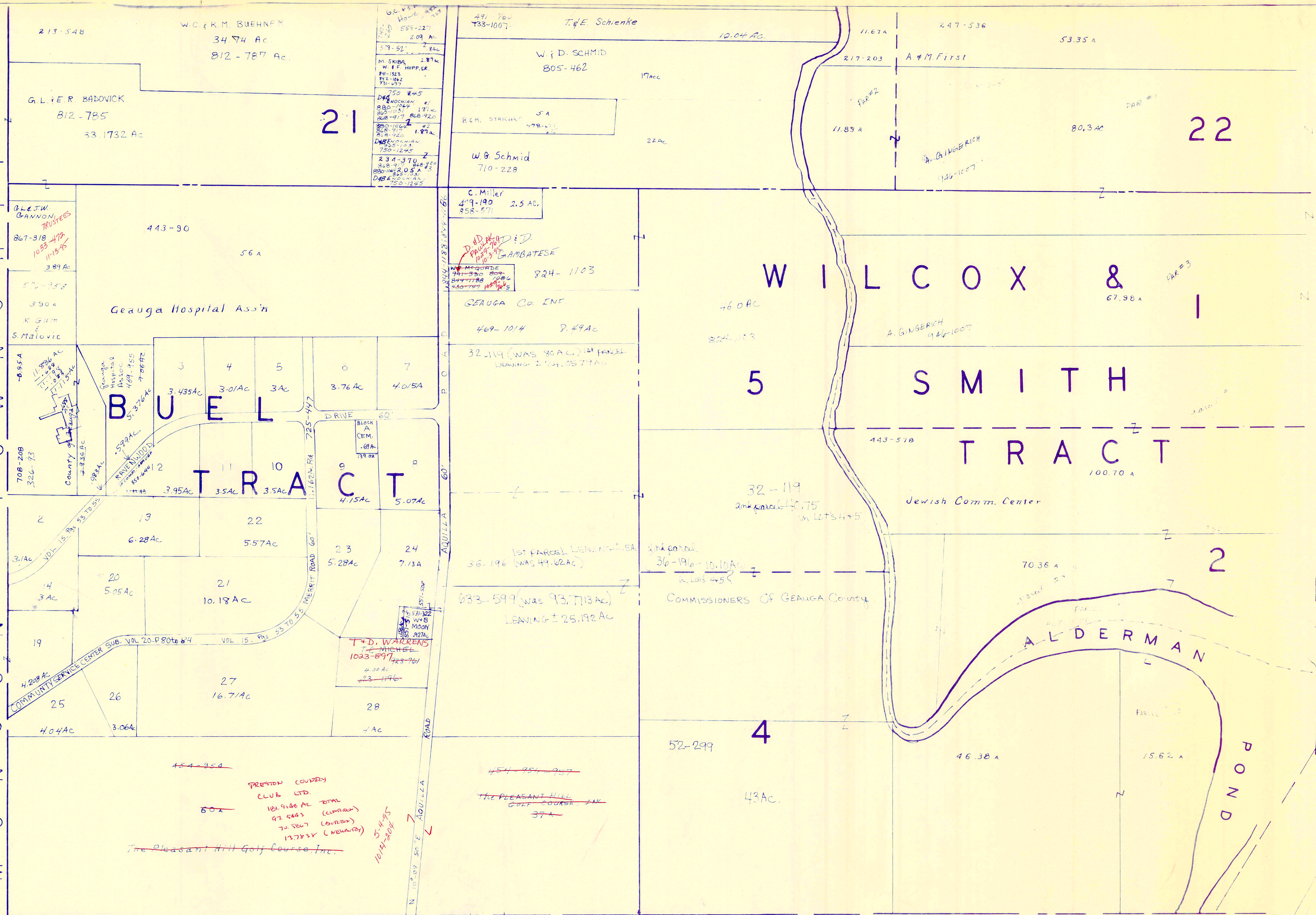
SCALE 1" = 300'

JANUARY 1995
 RELATIVE REPRESENTATION

A	B	C	D
E	F	G	H
I	J	K	L
M	N	O	P

CLARIDON TWP.

M
U
N
I
C
I
P
A
L
T
O
W
N
S
H
I
P



21

22

5

SMITH

TRACT

2

4

BURTON TOWNSHIP

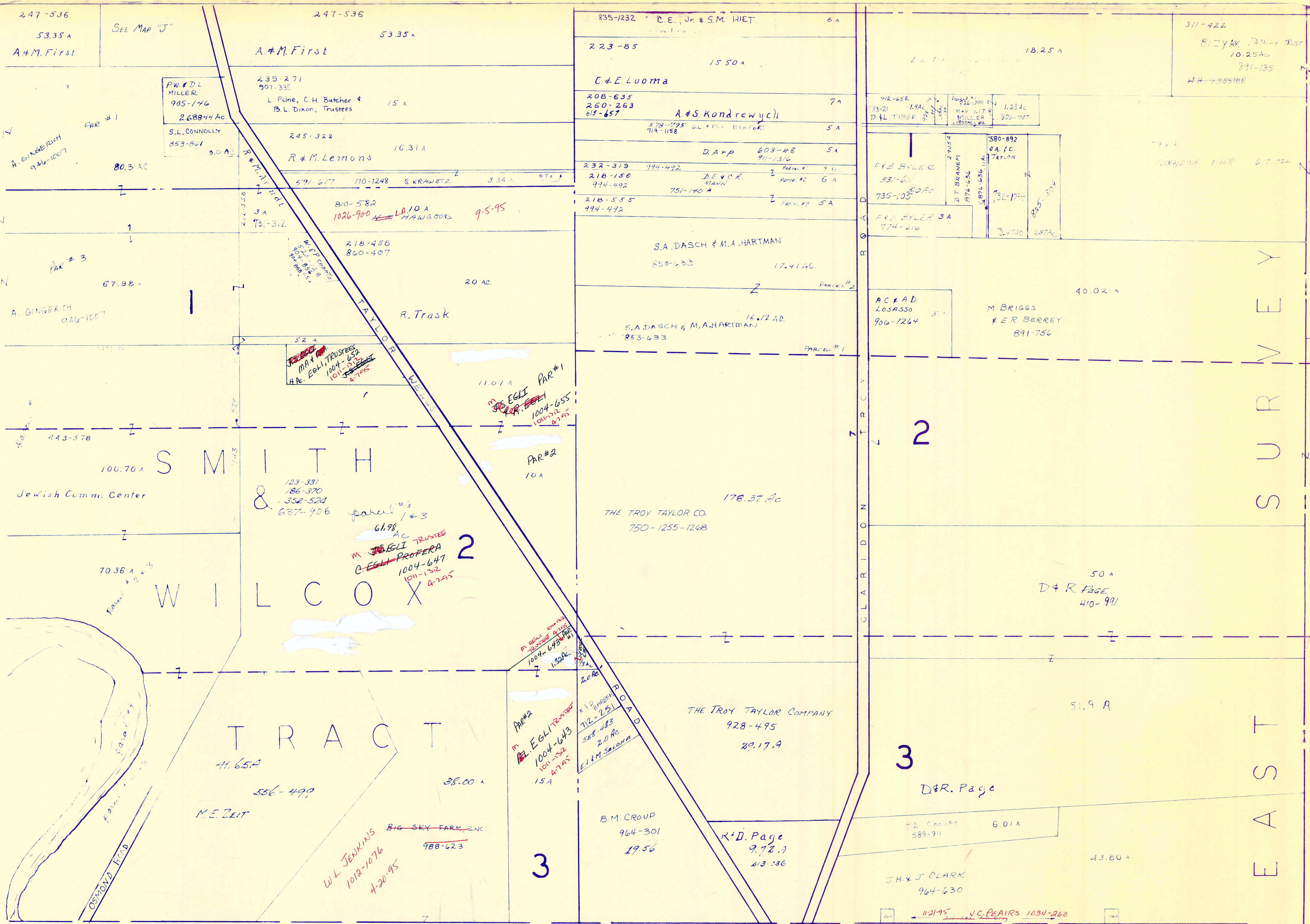
SCALE 1" = 300'

A	B	C	D
E	F	G	H
I	J	K	L
M	N	O	P

JANUARY 4, 1995
RELATIVE REPRESENTATION

* Inadequate description

CLARIDON TWP



BURTON TOWNSHIP

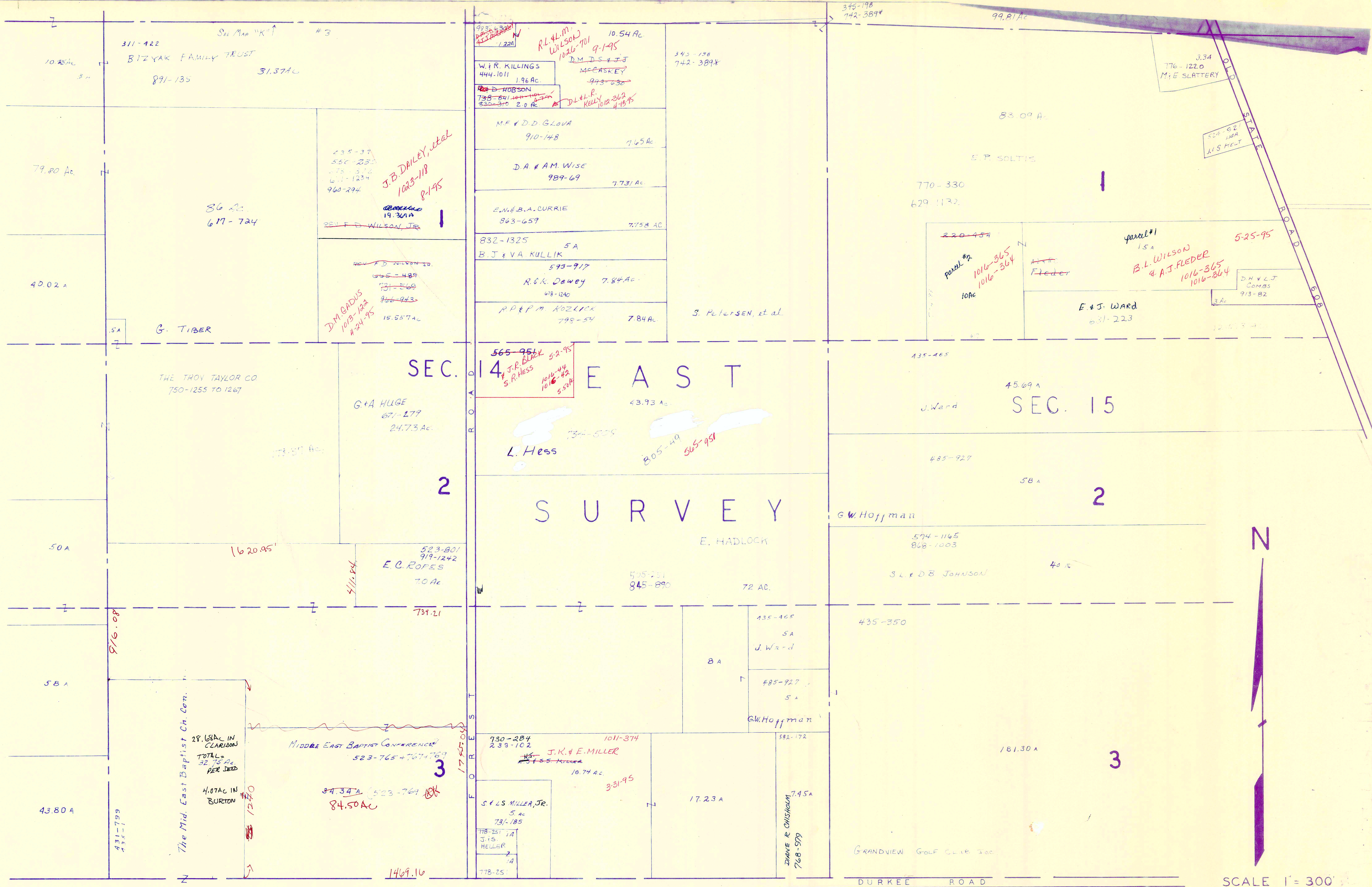
A	B	C	D
E	F	G	H
I	J	K	L
M	N	O	P

CLARIDON TWP.

JANUARY 1, 1995
RELATIVE REPRESENTATION

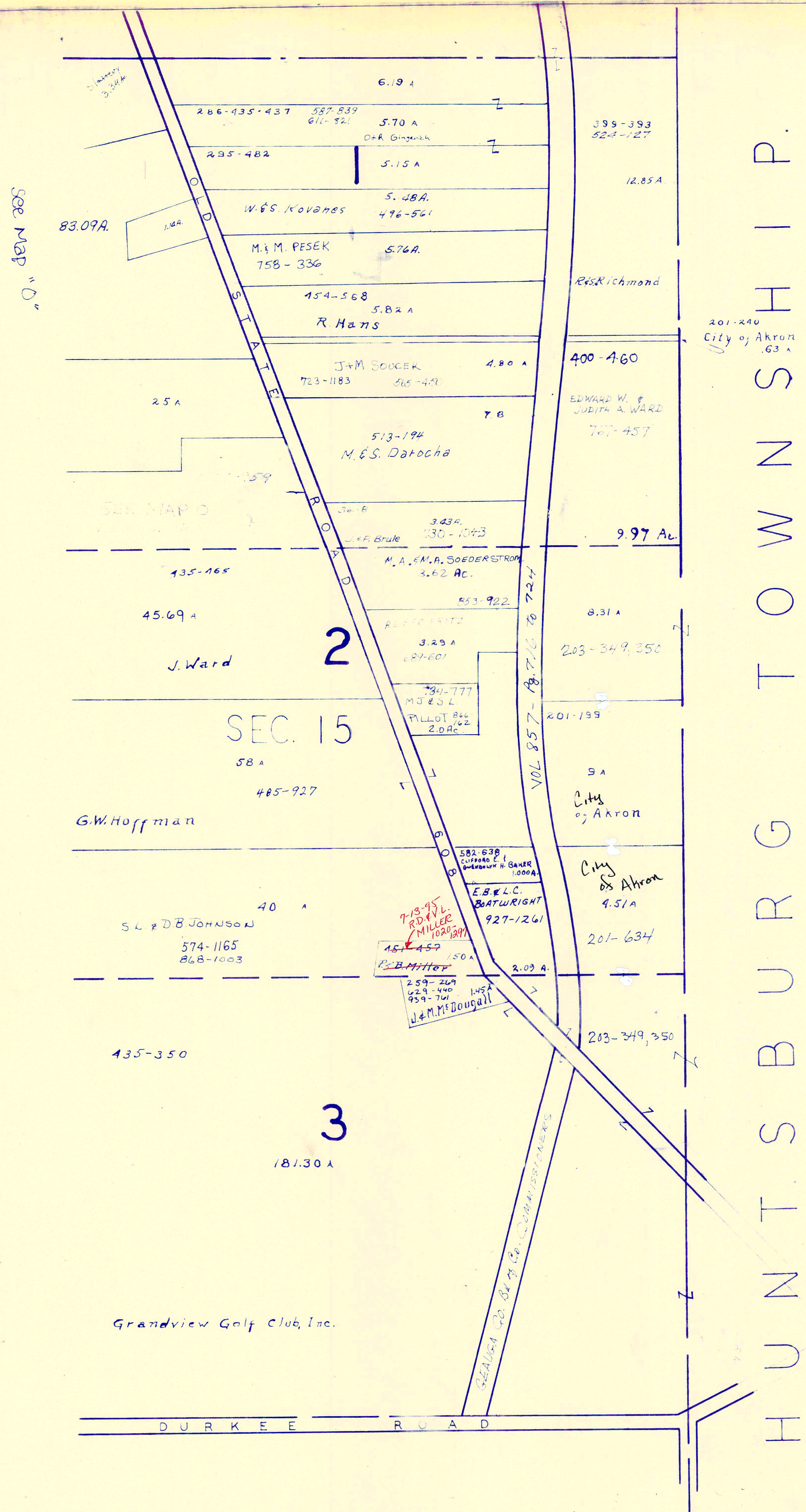
SCALE 1" = 300'

* Inadequate description



A	B	C	D
E	F	G	H
I	J	K	L
M	N	O	P

* Inadequate description



HUNTSGROVE TOWNSHIP

BURTON TWP.

SEE MAP "O"

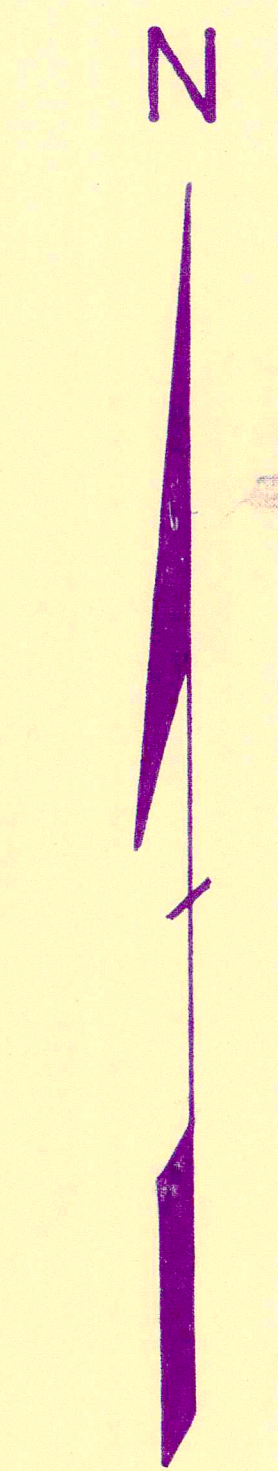
SEE MAP D

2

SEC. 15

3

DURKEE ROAD



SCALE 1" = 300'

* Inadequate description

JANUARY 1, 1995
RELATIVE REPRESENTATION

A	B	C	D
E	F	G	H
I	J	K	L
M	N	O	P

CLARIDON TWP.

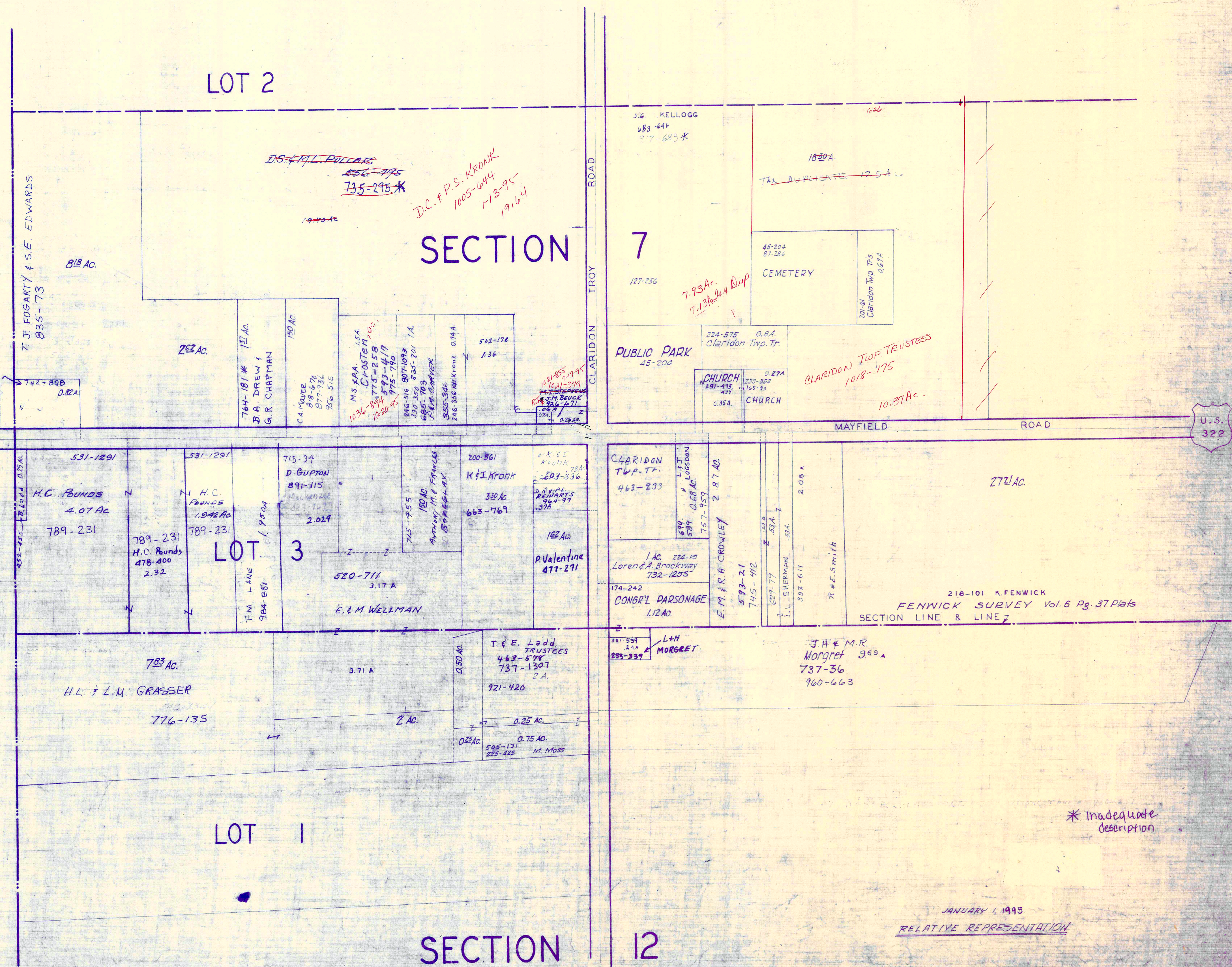
CLARIDON T.P. [CENTER]

SCALE 1IN.=2.5CH.=165FT.

JAN 1, 1982

U.S. 322

U.S. 322



* Inadequate description

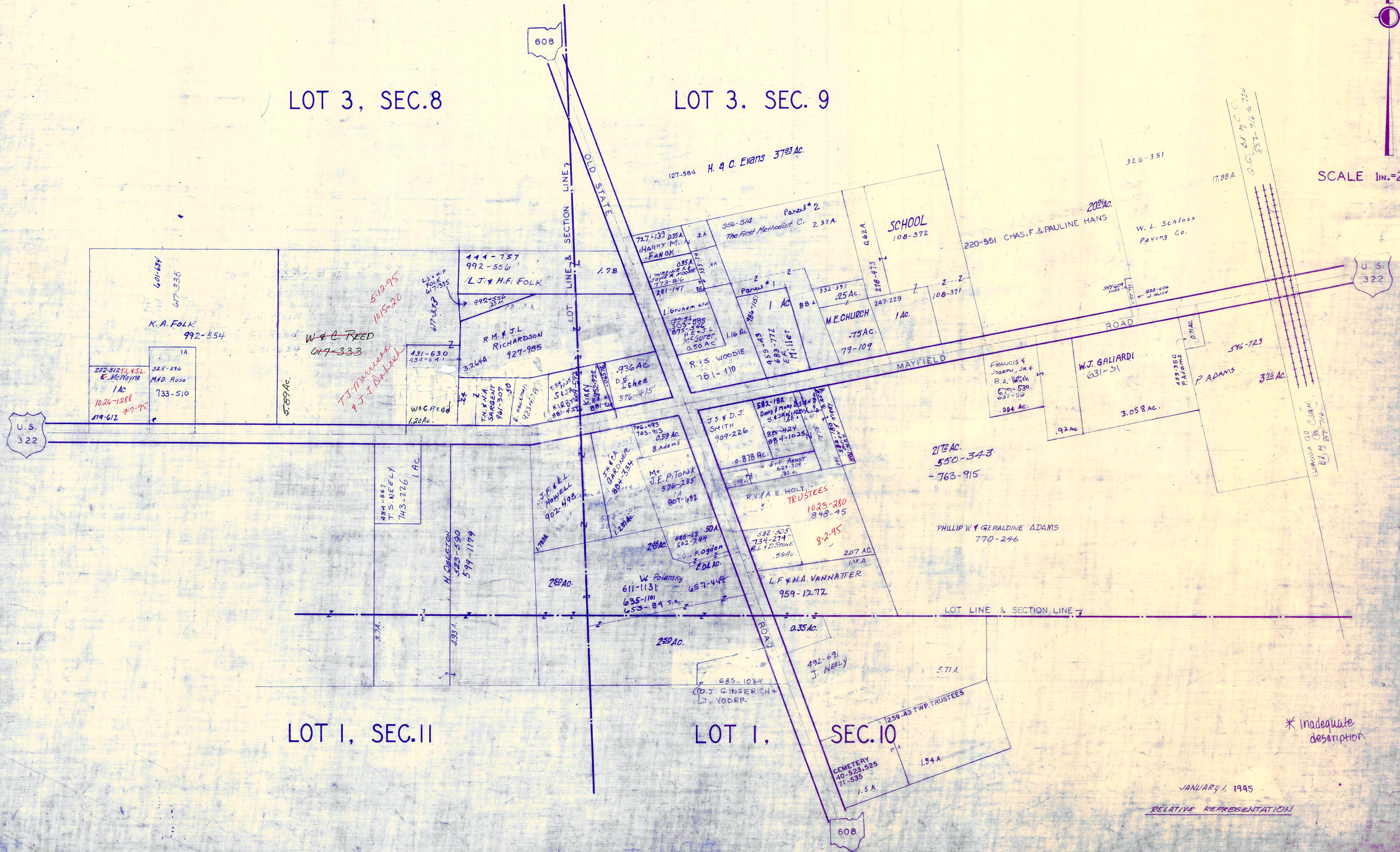
JANUARY 1, 1993
RELATIVE REPRESENTATION

6-Q

EAST CLARIDON
AND VICINITY

CLARIDON TP.

EAST CLARIDON
AND VICINITY

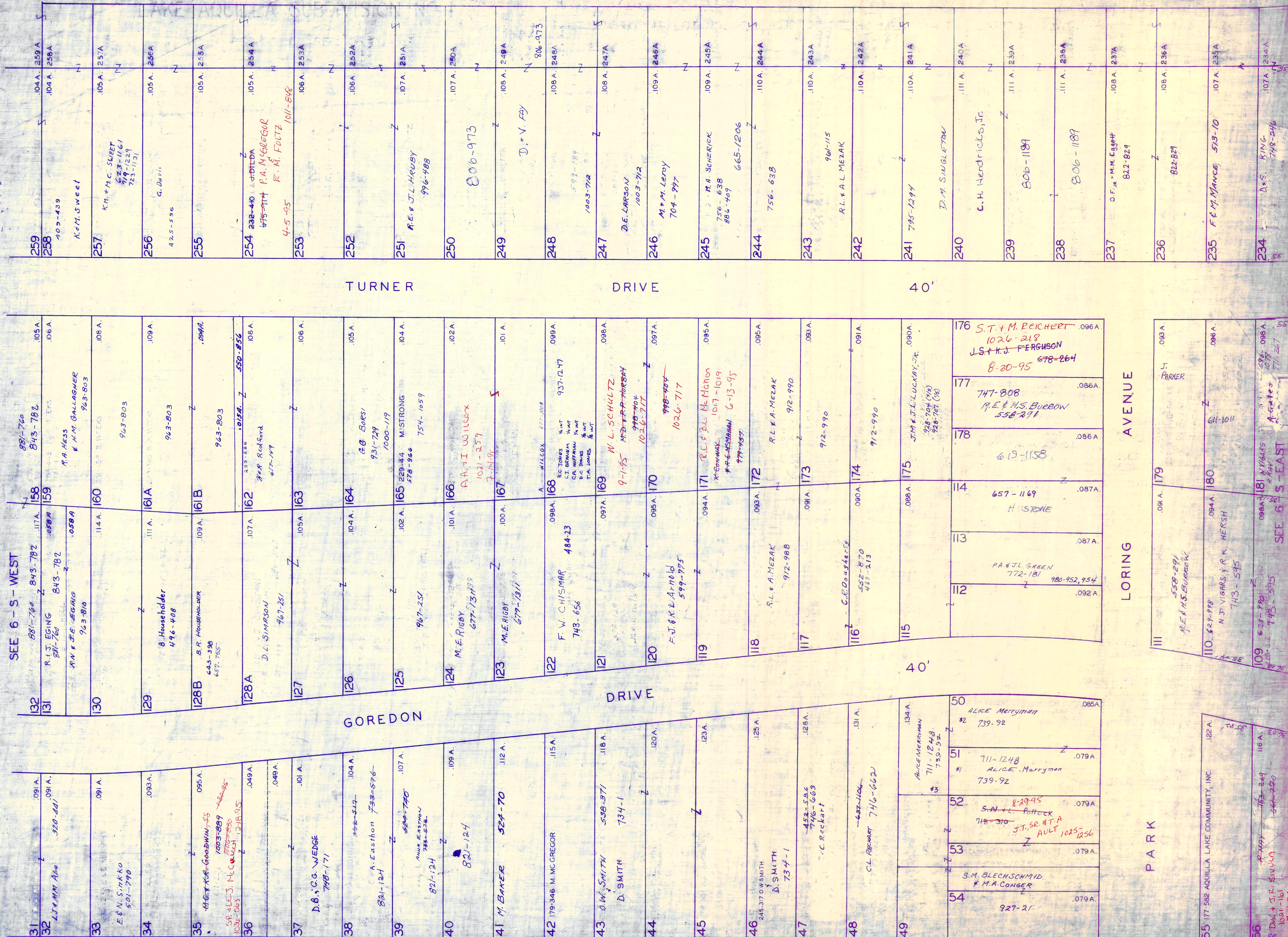


SCALE 1IN.=25CH.=165'

* Inadequate description

JANUARY 1, 1995
RELATIVE REPRESENTATION

SCALE 1 IN = 30 FT.



SEE 6 - S - WEST

SEE 6 - S - EAST

LAKE AQUILLA SUBDIVISION NO 1 & LAKE AQUILLA SUBDIVISION NOT ADDITION VOL. 1 PGS 50 & 51 REC OF PLATS VOL. 4 PGS 23 & 24 REC OF PLATS

NOW AQUILLA VILLAGE VOL. 4 PAGES 26-27 REC. OF PLATS JAN. 1, 1995 RELATIVE REPRESENTATION

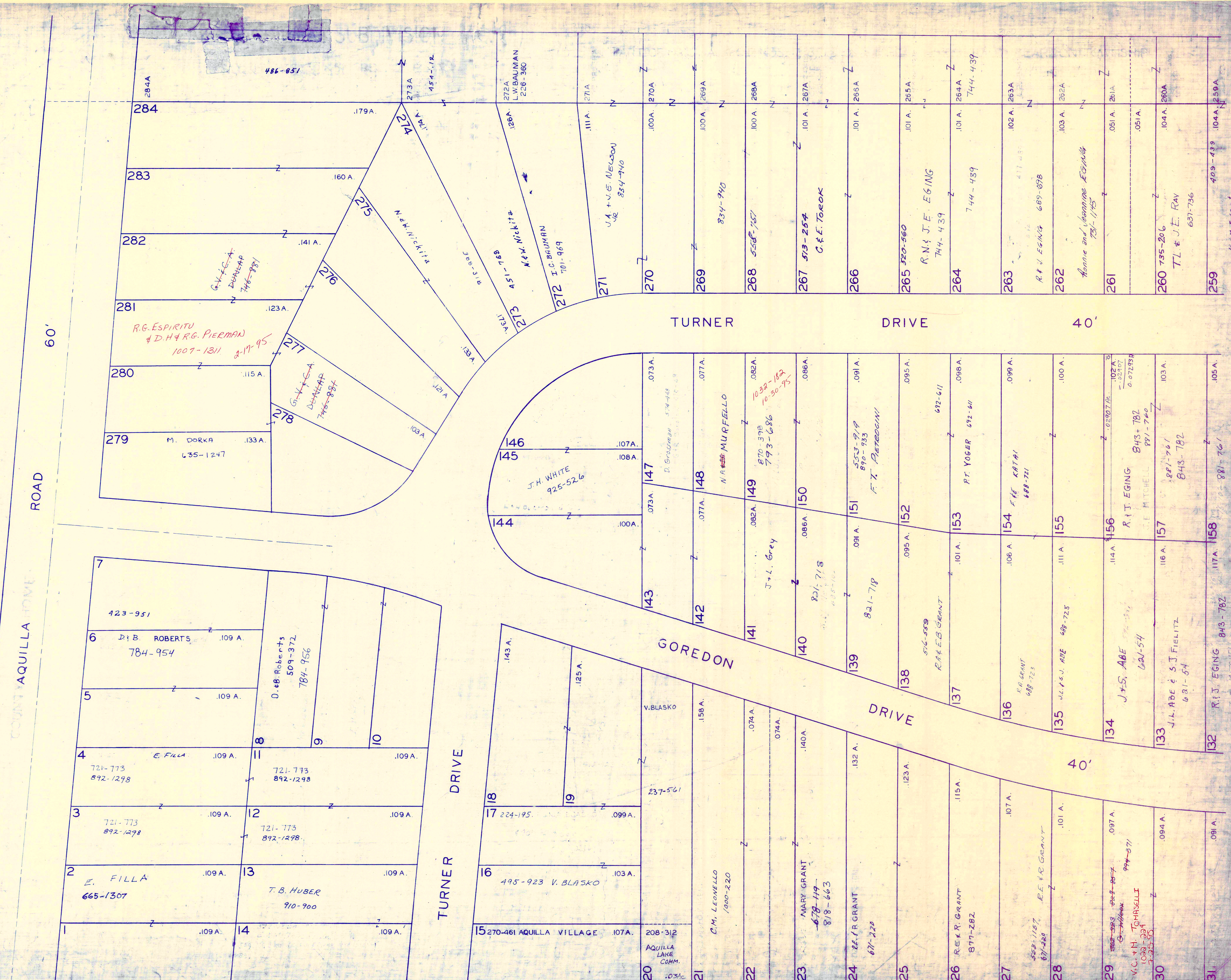
* Inadequate description

6-5

SEE 6 - S - CTR.		TURNER DRIVE		40'	
108	E. J. DEELY 933-242	182	E. J. DEELY 933-242	233	D.S. KING 749-246
107	E. J. DEELY 933-242	183	D. Olive chl 496-996	232	452-70 4-6444H 762-849 1034-599
106	E. BEIFUS 763-1051	184	D.A. & K.E. HARISON R.A. & D.A. SCHWARTZ 1013-59 762-405 4-24-55	231	762-849 T. JAITE 1034-599
105	763-1051	185		230	418-480 596-1120 E.A. Soika
104	762-644 C. R. HARPER, JR.	186		229	623-400 PER BAROS
103	762-644	187		228	749-912
102		188		227	749-912
101		189		226	F. J. & S. M. STROHMEIER
100	1000-202 L.D. & S.A. GLOVER	190	1000-202	225	F. & S. STROHMEIER 653-769
99	338-759	191	R.D. WHITING 895-1187	224	239-67
98	224-284 S. VARGO	192	843-1056 895-1187	223	
97		193	843-1056 895-1187	222	
96	American Housing Trust II 819-684	194	829-1099 D.F.K. REED	221	425-1037 574-796 R. Sharp
95	K.A. KRAGE P.T. & T.M. HOLMES 928-495 1025-667	195		220	
94		196	H.D. & D. FINNERTY 923-399	219	926-453 B.J. Kowalski 707-1313 802-1834
93	S.J. Smith 593-144	197	923-399	218	
92	255-282	198	923-399	217	
91		199	923-399	216	
90	806-231	200	C.M. HARFF 886-231	215	635-1050 C.H. HENDERICKS, JR.
89		201	886-231	214	165-354 J.H. TRAVERSE JR 777-674 C.H. HENDERICKS JR 1026-70 8-30-95
88		202		213	285-1098 L. TARANTINO
87		203	J+E RIDER	212	251-241 S&J.CENTA 733-802
86		204	538-1118	211	245-599 S&J.CENTA
85		205	188-229 AQUILLA LAKE COM.	210	
84	233-249 L. ZINNER	206	R.M. Pawlicki 699-841	209	C.L. MANNING 782-1140
83		207	R.M. Pawlicki 699-839	208	
82		85			
81		86			
80	D.A. LOFTUS J.E. DeGUBERT 571-1318	87			
79	631-1031 J.M. BRIGGS	88			
78	1/2 INT 631-1104 L. Shea & FR. R. Baumgartner	89			
77	469-242	90			
76	192-800 H.C. & H.M. HECKER	91			
75	495-925 V. Blasko	92			
74	887-454	93			
73	R.J. NIKHAZY	94			
72		95			
71	R.L. & A.L. MEZAK 971-345	96			
70		97			
69	R.P. FLECKENSTEIN 932-390	98			
68		99			
67	L.D. ZERBIAN 992-614	100			
66		101			
65	185-482 J.J. ZEMA ETAL	102			
64	G.F. Davis 484-742	103			
63		104			
62	992-229	105			
61	M. KOSZEWSKI 992-229	106			
60	179-381 J.B. & L. CHAPARD	107			
59	992-229	108			
58	M. KOSZEWSKI 992-229	109			
57	J. Pierce	110			

SCALE 1" = 30 FT.

SCALE 1"=30 FT.



LAKE AQUILLA SUBDIVISION NO. 1 & LAKE AQUILLA SUBDIVISION NO. 1 ADDITION
 VOL. 1 PGS 50 & 51 REC. OF PLATS VOL. 4 PGS 23 & 24 REC. OF PLATS

NOW AQUILLA VILLAGE VOL. 4 PAGES 26-27 REC. OF PLATS

JANUARY 1, 1995 RELATIVE REPRESENTATION

* Inadequate description

6-S WEST

AQUILLA VILLAGE VOL. 4, PAGES 26-27 REC. OF PLATS
FORMERLY
LAKE AQUILLA ESTATES COMPANY'S SUBDIVISION NO. 1

AND RESUBDIVISION OF BLOCKS I & J AND SUBLOTS
NOS. 125 TO 141 INCLUSIVE IN BLOCK D

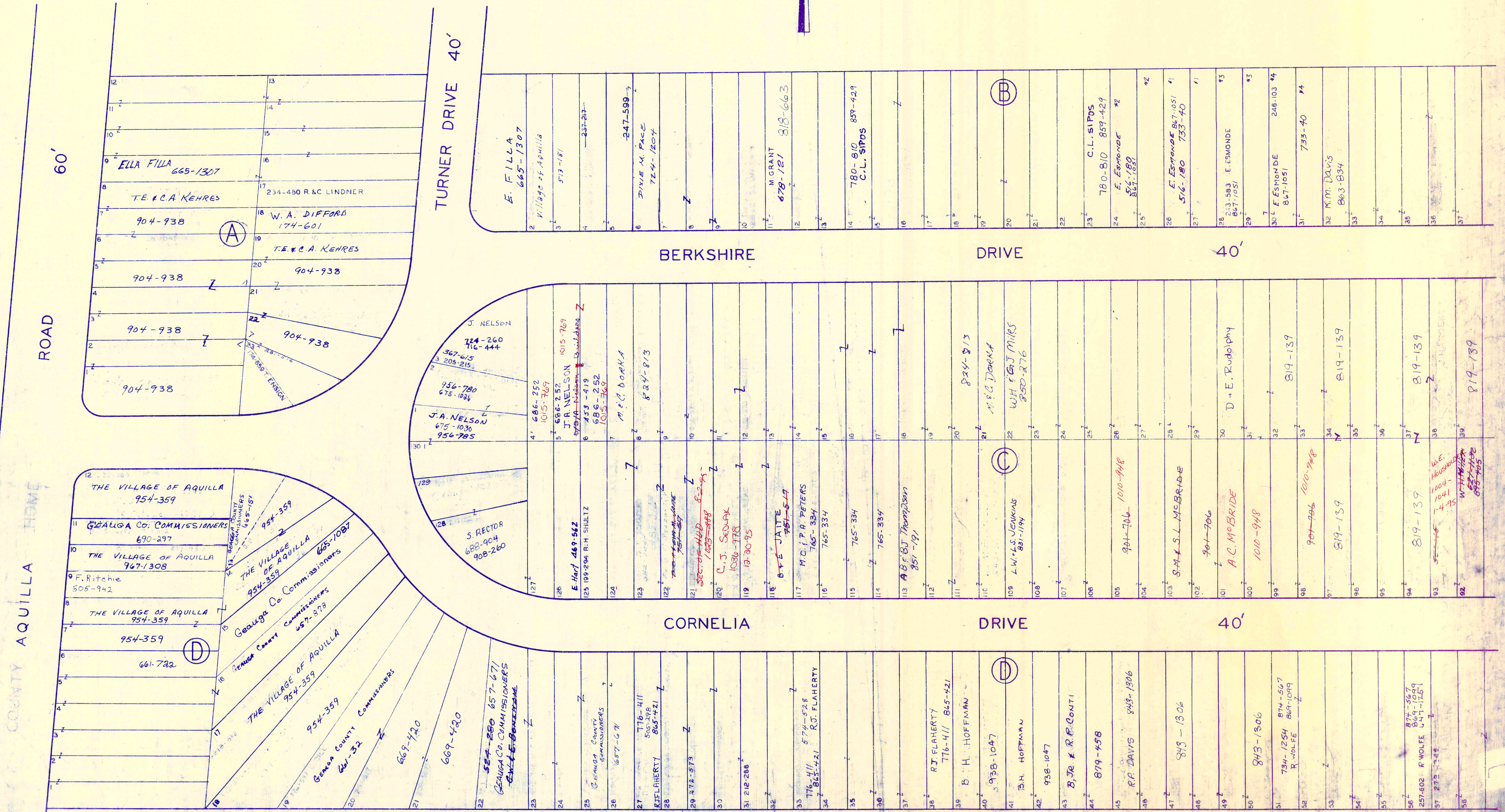
VOL. 2 PAGES 6, 7, 8, 9, 10, 11, 12, 19 & 33 REC. OF PLATS

SCALE 1 INCH = 40 FEET

PART OF ORIGINAL LOT NOS. 9 & 10 OF THE HOLMES TRACT CLARIDON TOWNSHIP

JAN. 1, 1995

RELATIVE REPRESENTATION



* Inadequate description

SEE 6-T-2

AQUILLA VILLAGE VOL. 4, PAGES 26-27 REC. OF PLATS
FORMERLY
LAKE AQUILLA ESTATES COMPANY'S SUBDIVISION NO. 1

AND RESUBDIVISION OF BLOCKS I & J AND SUBLOTS
NOS. 125 TO 141 INCLUSIVE IN BLOCK D

PART OF ORIGINAL LOT NOS. 9 & 10 OF THE HOLMES TRACT

CLARIDON TOWNSHIP

VOL. 2 PAGES 6, 7, 8, 9, 10, 11, 12, 19 & 33 REC. OF PLATS

SCALE 1 INCH = 40 FEET

JAN. 1, 1995

RELATIVE REPRESENTATION

SEE 6-T-1

91	C. A. MAUER 856-562	40
92	956-574	41
93		42
94	316-422	43
95	B. W. Yost	44
96	487-1022	45
97	806-591	46
98	806-591	47
99	M. A. DORKA 806-583	48
100	953-541	49
101	806-583	50
102	953-541	51
103	806-583	52
104	953-541	53
105	806-583	54
106	953-541	55
107	806-583	56
108	953-541	57
109	806-583	58
110	953-541	59
111	806-583	60
112	953-541	61
113	806-583	62
114	953-541	63
115	806-583	64
116	953-541	65
117	806-583	66
118	953-541	67
119	806-583	68
120	953-541	69
121	806-583	70
122	953-541	71
123	806-583	72
124	953-541	73
125	806-583	74
126	953-541	75
127	806-583	76
128	953-541	77
129	806-583	78
130	953-541	79
131	806-583	80
132	953-541	81
133	806-583	82
134	953-541	83
135	806-583	84
136	953-541	85

CORNELIA

38		81
39	K. M. DAVIS 863-834	82
40		83
41		84
42		85
43		86
44		87
45		88
46		89
47		90
48		91
49		92
50		93
51		94
52		95
53		96
54		97
55		98
56		99
57		100
58		101
59	K. J. Thompson 478-498	102
60		103
61		104
62		105
63		106

BERKSHIRE

SEE 6-T-2

97	D. PROSVICH & 709-124 G. SANKOVICH	97
98		98
99	709-124	99
100		100
101		101
102		102
103		103
104		104
105		105
106		106
107		107
108		108
109		109
110		110
111		111
112		112
113		113
114		114
115		115
116		116
117		117
118		118
119		119
120		120
121		121
122		122
123		123
124		124
125		125
126		126
127		127
128		128
129		129
130		130

DRIVE

LORING AVENUE

97		709-124
98		
99		709-124
100		
101		
102		
103		
104		
105		
106		
107		
108		
109		
110		
111		
112		
113		
114		
115		
116		
117		
118		
119		
120		
121		
122		
123		
124		
125		
126		
127		
128		
129		
130		

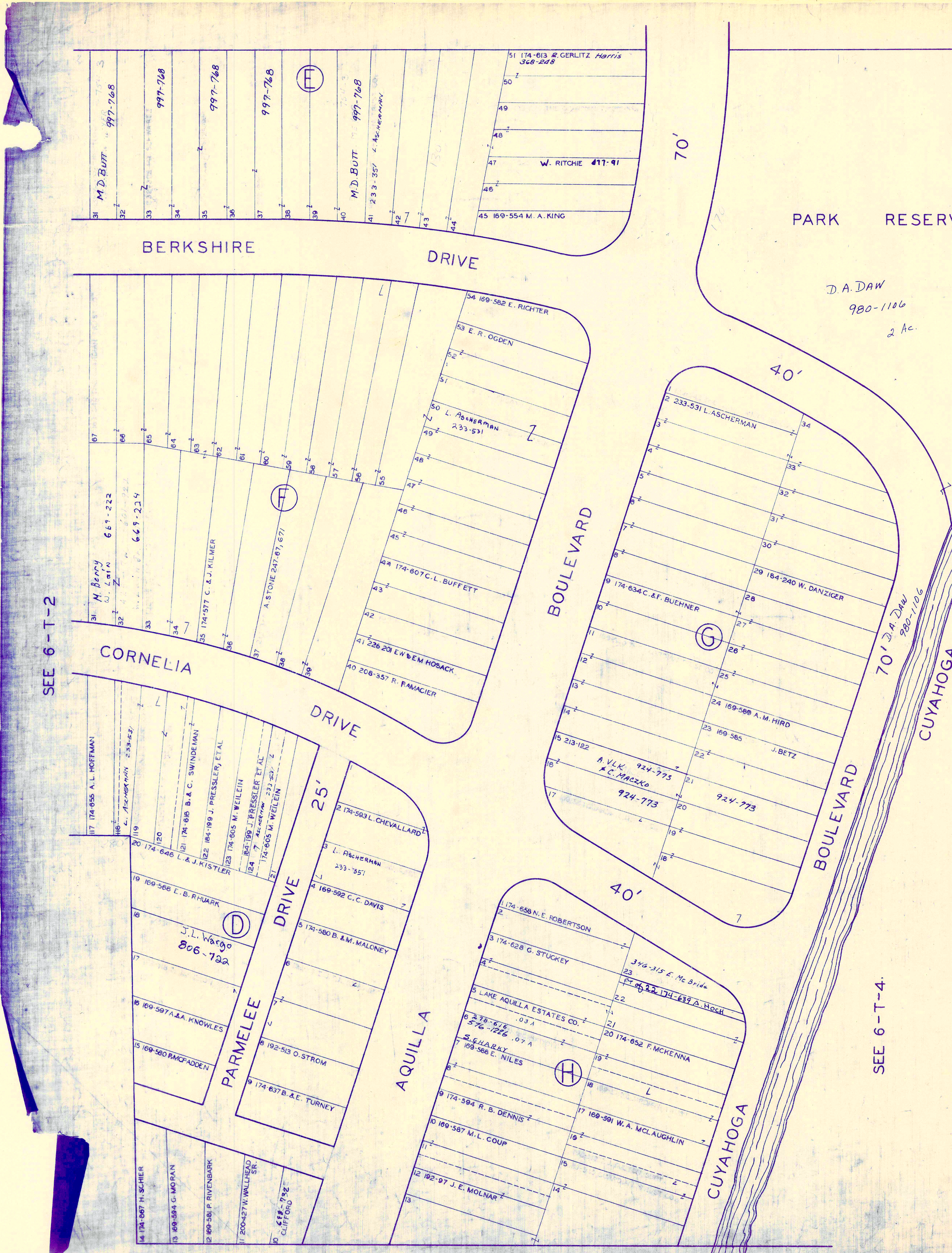
DRIVE

40'

1		
2		
3		
4		
5		
6		
7		
8		
9		
10		
11		
12		
13		
14		
15		
16		
17		
18		
19		
20		
21		
22		
23		
24		
25		
26		
27		
28		
29		
30		

* inadequate description

6-T-2



AQUILLA VILLAGE VOL. 4 PAGES 26-27 REC. OF PLATS
 FORMERLY
 LAKE AQUILLA ESTATES COMPANY'S SUBDIVISION NO. 1

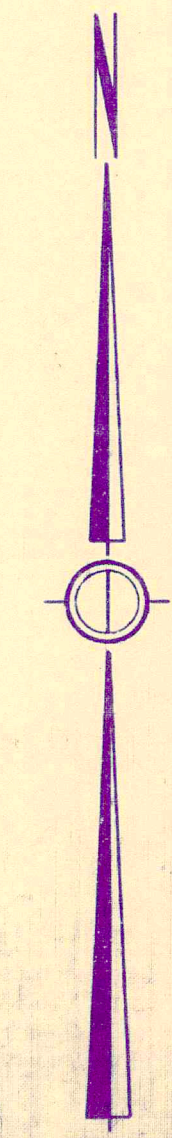
AND RESUBDIVISION OF BLOCKS I & J AND SUBLOTS
 NOS. 125 TO 141 INCLUSIVE IN BLOCK D

PART OF ORIGINAL LOT NOS. 9 & 10 OF THE HOLMES TRACT CLARIDON TOWNSHIP

VOL. 2 PAGES 6, 7, 8, 9, 10, 11, 12, 19 & 33 REC. OF PLATS

SCALE 1 INCH = 40 FEET

JAN 1, 1995
 RELATIVE REPRESENTATION



* Inadequate description

SEE 6-T-2

SEE 6-T-4

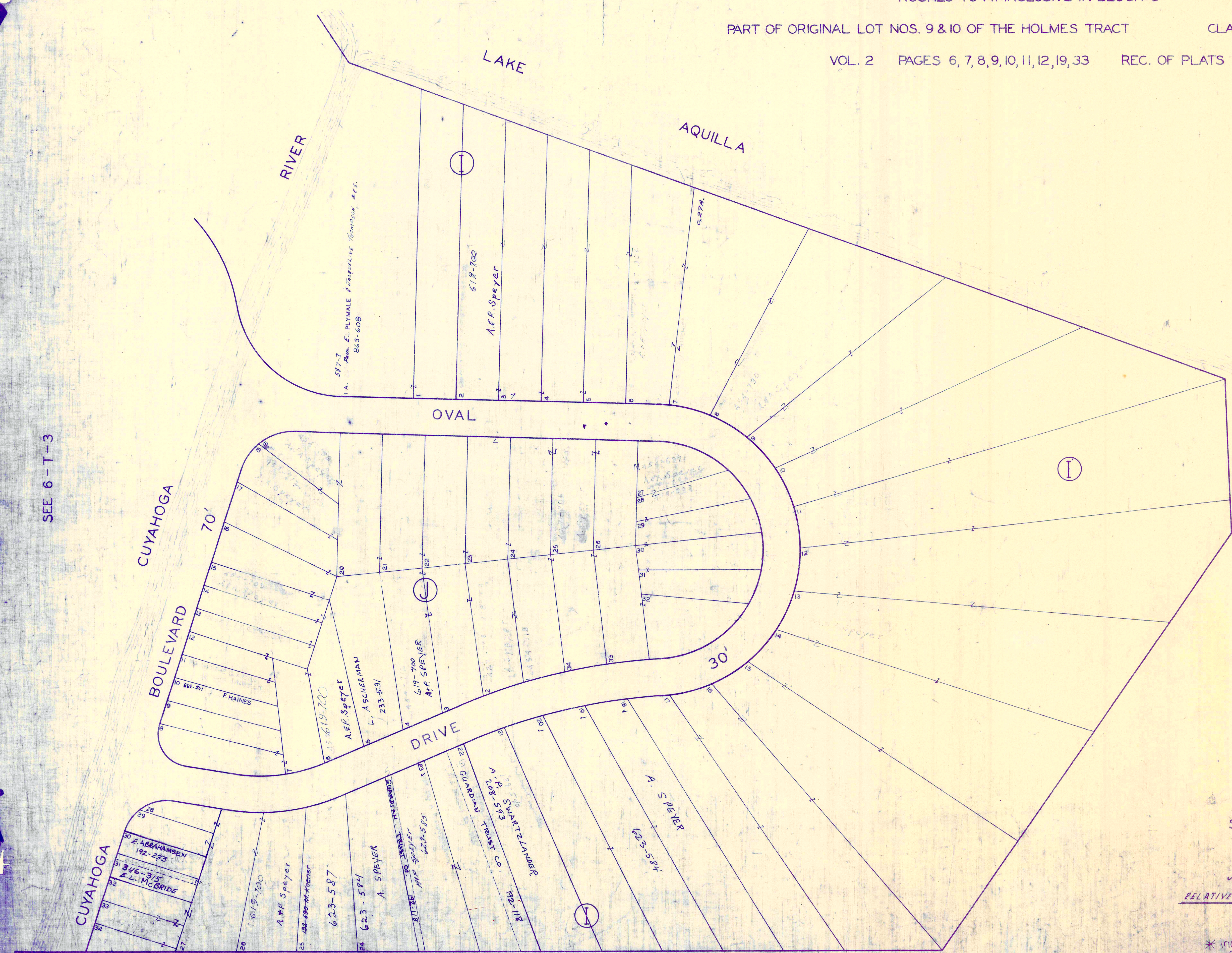
AQUILLA VILLAGE VOL. 4 PAGES 26-27 REC. OF PLATS
FORMERLY
LAKE AQUILLA ESTATES COMPANY'S SUBDIVISION NO. 1

AND RESUBDIVISION OF BLOCKS I & J AND SUBLOTS
NOS. 125 TO 141 INCLUSIVE IN BLOCK D

PART OF ORIGINAL LOT NOS. 9 & 10 OF THE HOLMES TRACT

CLARIDON TOWNSHIP

VOL. 2 PAGES 6, 7, 8, 9, 10, 11, 12, 19, 33 REC. OF PLATS



SEE 6-T-3

SCALE 1 INCH = 40 FEET

JAN 6, 1995
RELATIVE REPRESENTATION

* Inadequate description

CLARIDON
OR

6-T-4